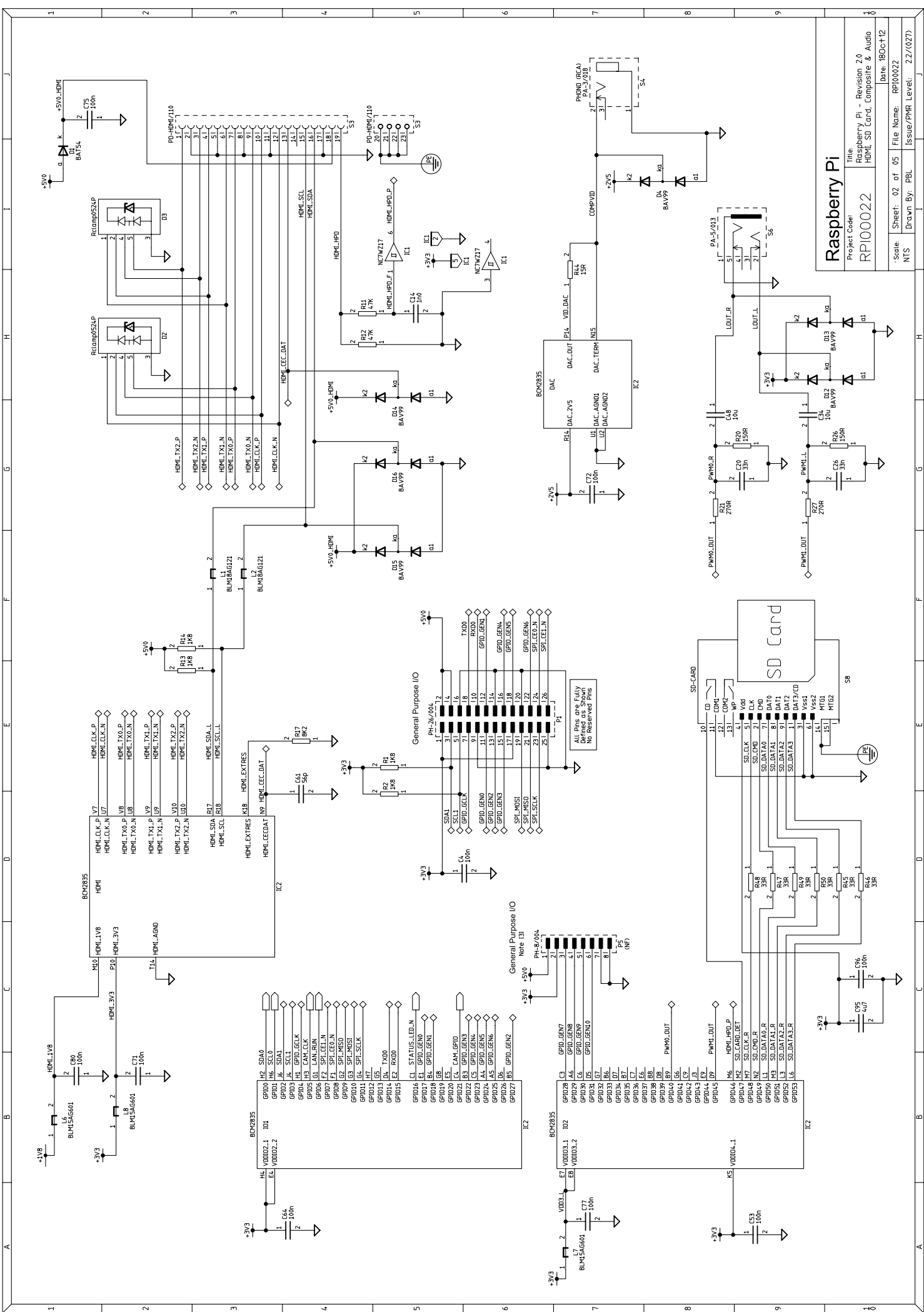


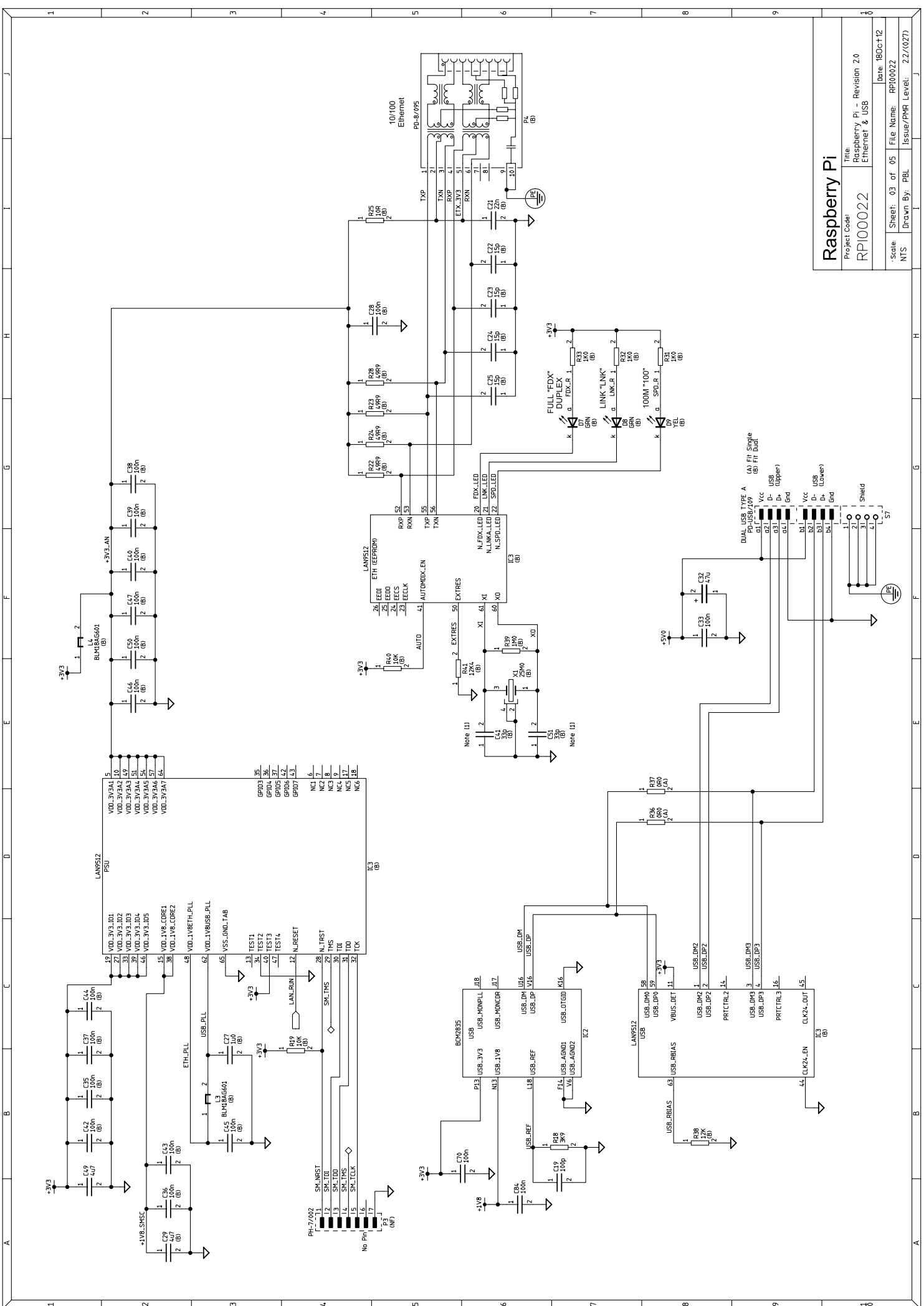
MEMORY: IC2A fitted as POP to IC2 - Note [2]
 256MByte = K4P 2 G3Z4ED
 512MByte = K4P 4 G3Z4EB

USB Power Input 5V 700mA min

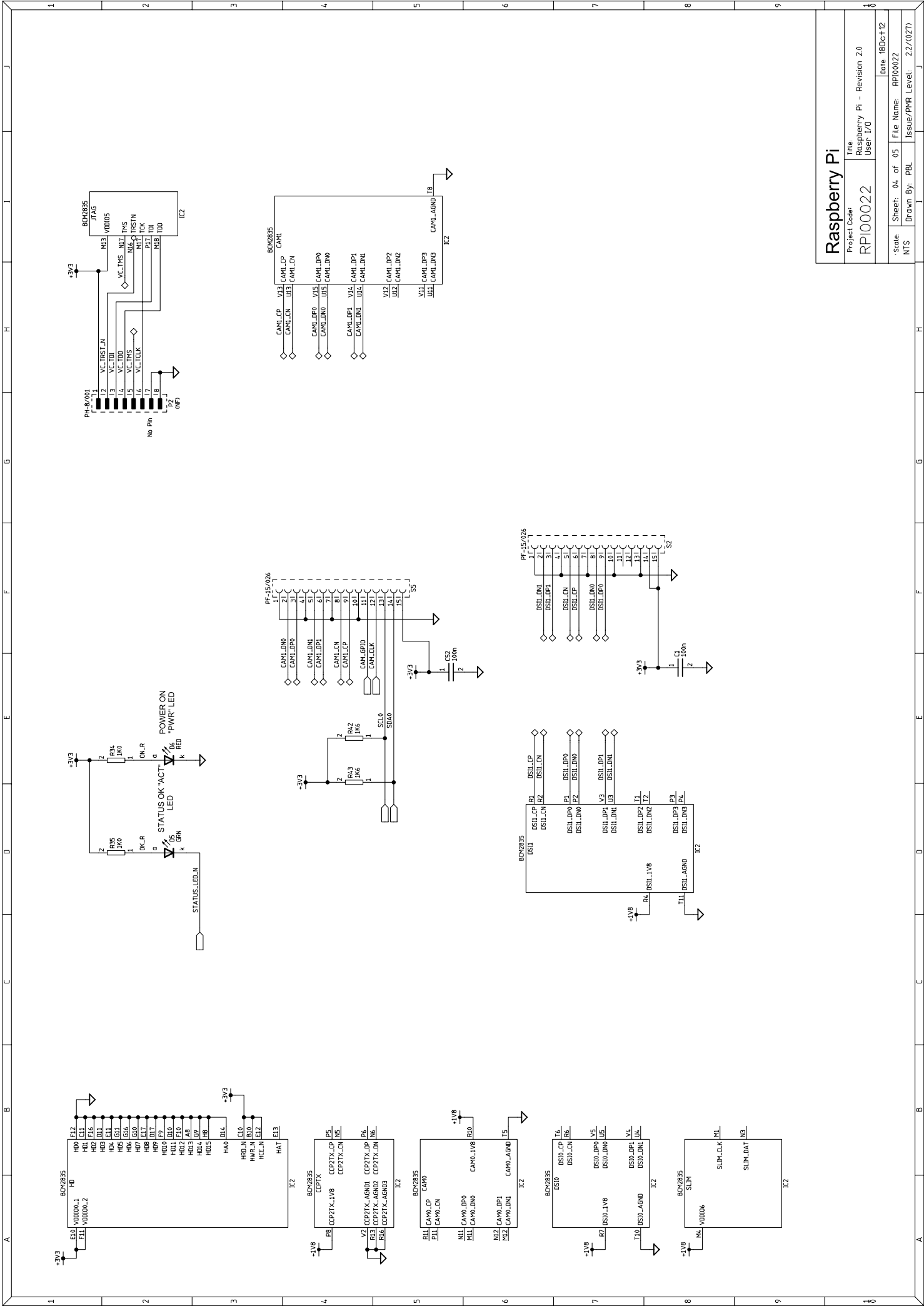
Please use Min
 405g mm Copper
 Area for pad 800mm

Raspberry Pi	
Project Code:	Raspberry Pi - Revision 2.0
Issue:	Power Input & Osc
Sheet: 01 of 05	File Name: RPI00022
Drawn By: PBL	Issue/PMR Level: 2.2/027

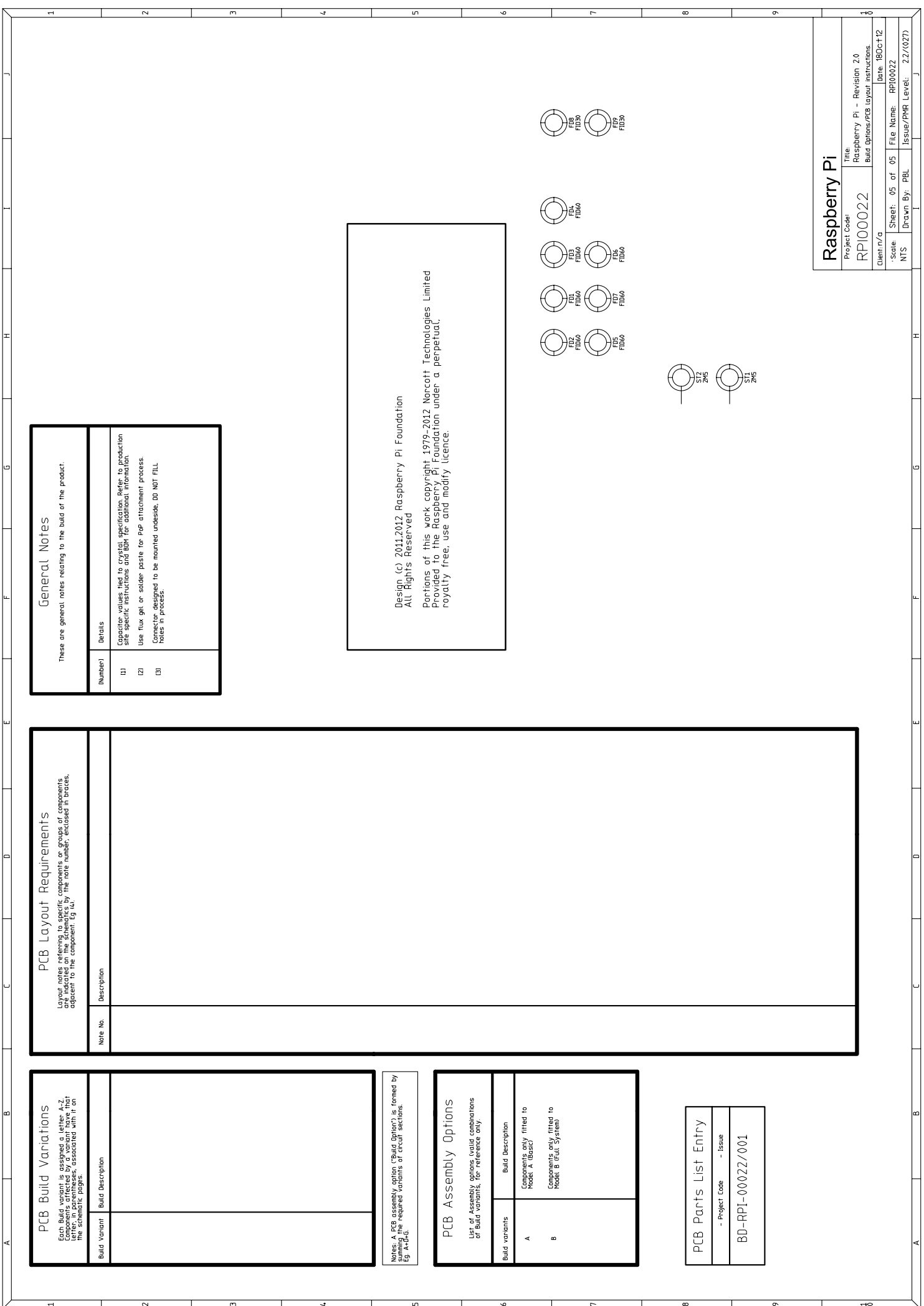




Raspberry Pi			
Project Code:	Title: Raspberry Pi - Revision 2.0		Date: 18Oct12
RP100022	Ethernet & USB		
-state: NTS	Sheet: 03 of 05	File Name: RP100022	
	Drawn By: PBL	Issue/PMR Level: 2.2/027	



Raspberry Pi
 Project Code: RPI00022
 Title: Raspberry Pi - Revision 2.0
 User: I/O
 Date: 18Oct12
 State: NTS
 Sheet: 04 of 05
 Drawn By: PBL
 File Name: RPI00022
 Issue/PMR Level: 2Z/027



PCB Build Variations	
Each Build variant is assigned a letter, A-Z, and a number, 1-10, in parentheses, associated with it on the schematic pages.	
Build Variant	Build Description

Notes: A PCB assembly option ("Build Option") is formed by summing the required variants of circuit sections. Eg. A-10-6.

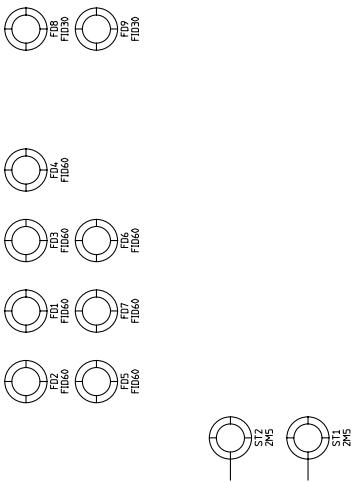
PCB Assembly Options	
List of Assembly options (valid combinations of Build variants, for reference only).	
Build variants	Build Description
A	Components fitted to Model A (Board)
B	Components only fitted to Model B (Full System)

PCB Parts List Entry	
- Project Code	- Issue
BD-RPI-00022/001	

PCB Layout Requirements	
Layout notes referring to specific components or groups of components are placed in the note number, enclosed in brackets, adjacent to the component. Eg. (4).	
Note No.	Description

General Notes	
These are general notes relating to the build of the product.	
(Number)	Details
(1)	Capacitor values tied to crystal specification. Refer to production site specific instructions and BOM for additional information.
(2)	Use flux gel or solder paste for Pnp attachment process.
(3)	Connector designed to be mounted underside. DO NOT FILL holes in process.

Design (c) 2011,2012 Raspberry Pi Foundation
 All Rights Reserved
 Portions of this work copyright 1979-2012 Norcott Technologies Limited
 Provided to the Raspberry Pi Foundation under a perpetual, royalty free, use and modify licence.



Raspberry Pi			
Project Code	Title	Revision	Date
RPI00022	Raspberry Pi - Build Options/PCB layout instructions	2.0	18Oct12
Client/nr/g	Sheet: 05 of 05	File Name:	RP100022
NTS	Drawn By: PBL	Issue/PMR Level:	22/027