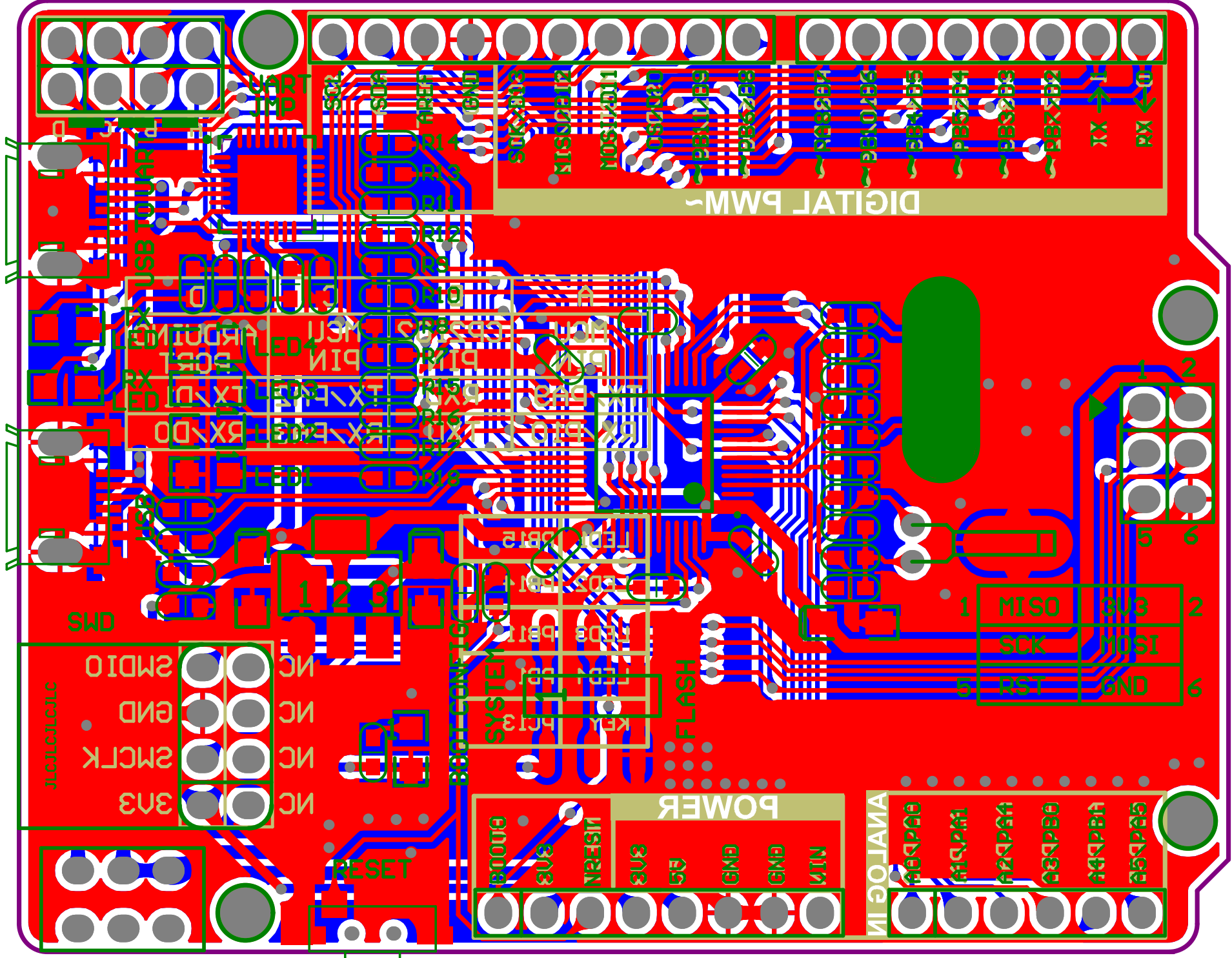


logo3
PWR LOGO
PWR_LOGO

Title		
Size	Number	Revision
A3		
Date:	2015-09-28	Sheet of
File:	H:\workspace\IOT STuno-	SchDown By:



DIGITAL PWM

- SUCX283
- MISO2812
- MOSI2811
- PB11289
- PB6288
- PA3287
- PB10286
- PB4285
- PB6284
- PB5283
- PBX282
- TX → 1
- RX ← 0

USB TO UART

- TX2813
- RX2812
- TX2811
- RX2810
- TX2809
- RX2808
- TX2807
- RX2806
- TX2805
- RX2804
- TX2803
- RX2802
- TX2801
- RX2800

SMD

- J1C1C1C1C1C
- 2MD10
- GND
- 2MCK
- 3N3
- NC
- NC
- NC
- NC
- NC

RESET

- B00TA
- BUS
- NRESIT
- BUS
- 5V
- GND
- GND
- VTN

POWER

- A0CPA6
- A1CPA1
- A2CPA4
- A3CPB6
- A4CPB4
- A5CPA5

ANALOG IN

- | | | | | |
|---|------|---|------|---|
| 1 | MISO | 3 | BUS | 2 |
| | SCK | | MOSI | |
| 5 | RST | 6 | GND | 6 |

- 1
- 2
- 3

- LED3281
- LED2281
- LED1281
- SYSTEM
- KEY_F13
- KEY_F12
- KEY_F11
- KEY_F10
- KEY_F09
- KEY_F08
- KEY_F07
- KEY_F06
- KEY_F05
- KEY_F04
- KEY_F03
- KEY_F02
- KEY_F01

FLASH

- 1
- 2
- 5
- 6